

Global top-tier testing & research institute **Katri** >
KATRI, creates a better future
with services trusted by customers

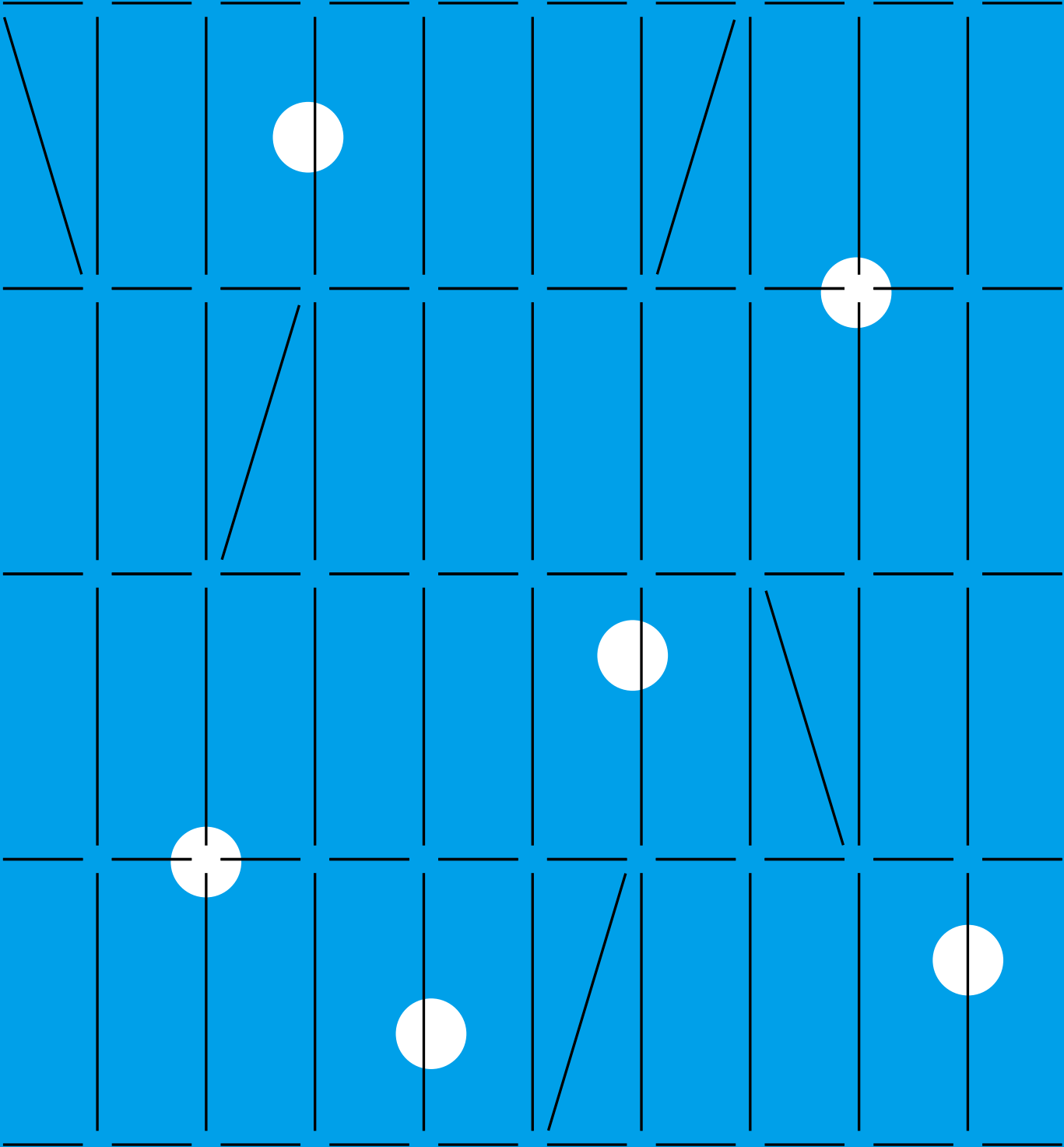


An internationally-recognized testing and certification institute in the fields of textile and fashion, children’s products, automobiles, component materials, chemicals, biotechnology, and environment, KATRI is a leader in testing, inspection, certification, R&D, and consulting activities. Based on a foundation of expertise and high-level test analysis capabilities, KATRI supports clients by enhancing product quality and honing their technological edge. KATRI is committed to constantly re-inventing itself to provide a better tomorrow for clients.

Cover Story a grid imagery that evokes textile weaves and digital systems



www.katri.re.kr



Better Future to You

Katri >

Better Future to You

Contents

1 With KATRI

A thank-you message from KATRI, KATRI’s values, and KATRI’s history.

04 Message

05 Values

06 KATRI’s History

2 To You

An overview of KATRI’s testing, certification, and inspection services and the domestic and international networks that make the process possible.

08 KATRI-Network

10 Business Services and Business Areas

11 Testing and Inspection Procedures

3 For Future

An overview of KATRI’s commitment to a better tomorrow through ESG management and digital transformation.

12 ESG

14 DX



Better Future To You

Global top-tier
testing & research
institute KATRI,
creates a better future
with services trusted
by customers

- Knowledge
- Attitude of enthusiasm
- Trust
- Responsibility
- Innovation

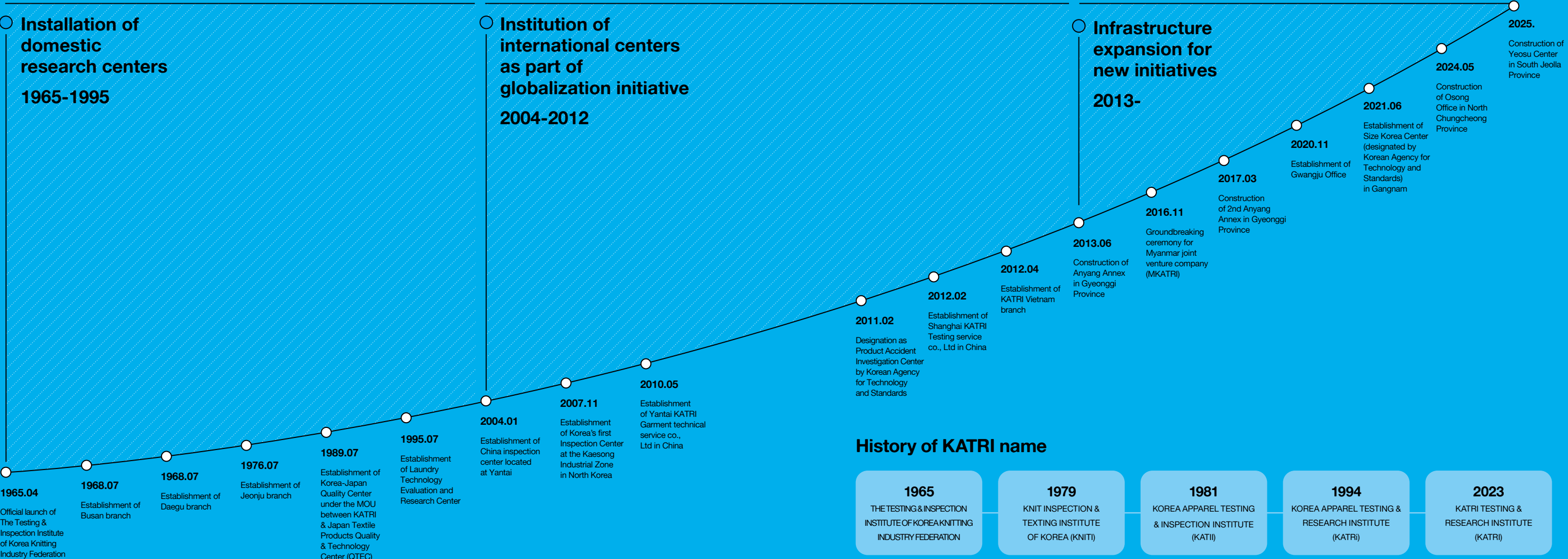
KATRI’s History

Founded in 1965 as the Testing & Inspection Institute of Korea Knitting Industry Federation, KATRI has played a critical part in consumer health and safety during the past half-century of development in Korea’s textile industry. Providing testing, inspection, and certification services for consumer products used in all spheres of life, the organization had a crucial role in Korea’s standardization industry, and upon the implementation of the KC Certification—which ensures that products adhere to official safety standards—KATRI has also dedicated itself to pre-and post-launch product safety management for lifestyle products and children’s goods.

As Korea’s first institute to be certified by the IDFB(the International Down and Feather Bureau) and IWTO(International Wool Textile Organisation) and as a protective apparel quality inspection institute, KATRI continues to take a leading role in the testing of down/feather and specific animal fibers and of protective apparel. KATRI’s array of thermal-analysis equipment also made it the first Korean institute to be recognized by Airbus as an independent external testing institute for composite materials. By expanding beyond materials for apparel and into areas such as polymers and composite materials, KATRI now offers services to industries such as automobiles, component materials, household chemicals and appliances, bio-health, and environment. With the goal of enhancing domestic industries’ international competitiveness, and assist Korean businesses in their venture into new markets, KATRI works not only with major business centers in Korea such as Seoul, Gyeonggi, central Korea, and the Yeongnam and Honam regions, but also with overseas areas with significant demand such as China and Vietnam to become an international testing and certification institute.

Designation Status

Ministry of Trade, Industry and Energy	<ul style="list-style-type: none">• KOLAS Recognized Testing Institute• Industry Standard Development Partner Institute	<ul style="list-style-type: none">• KOLAS Recognized Inspection Institute• Energy Efficiency Testing Institute	<ul style="list-style-type: none">• KOLAS Recognized Product Certification Institute
Ministry of Food and Drug Safety	<ul style="list-style-type: none">• Cosmetic Product Testing and Inspection Institute	<ul style="list-style-type: none">• Hygienic Product Testing and Inspection Institute	<ul style="list-style-type: none">• Quasi-drugs, etc. Testing and Inspection Institute
Ministry of Environment	<ul style="list-style-type: none">• Consumer Chemical Products and Biocides Testing and Inspection Institute	<ul style="list-style-type: none">• Environmental Measuring Instrument Integrity Inspection Institute	<ul style="list-style-type: none">• Biodegradability Synthetic Resin Testing Institute
Public Procurement Service	<ul style="list-style-type: none">• Public Procurement Service Designated Inspection Institute		
National Fire Agency	<ul style="list-style-type: none">• Korea Fire-fighting Apparatus Certification Institute		

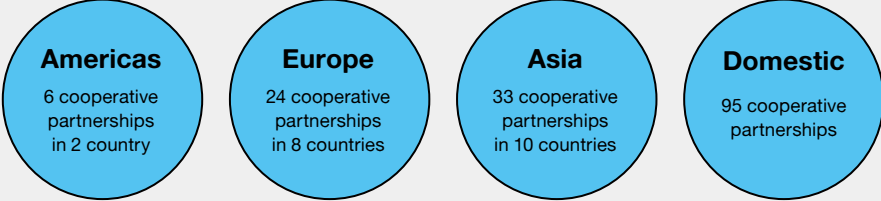


KATRI Network

KATRI has a global network of MOUs with organizations in 20 countries across the Americas, Europe, and Asia, and carries on partnerships with prominent domestic government, industry and academic institutes.

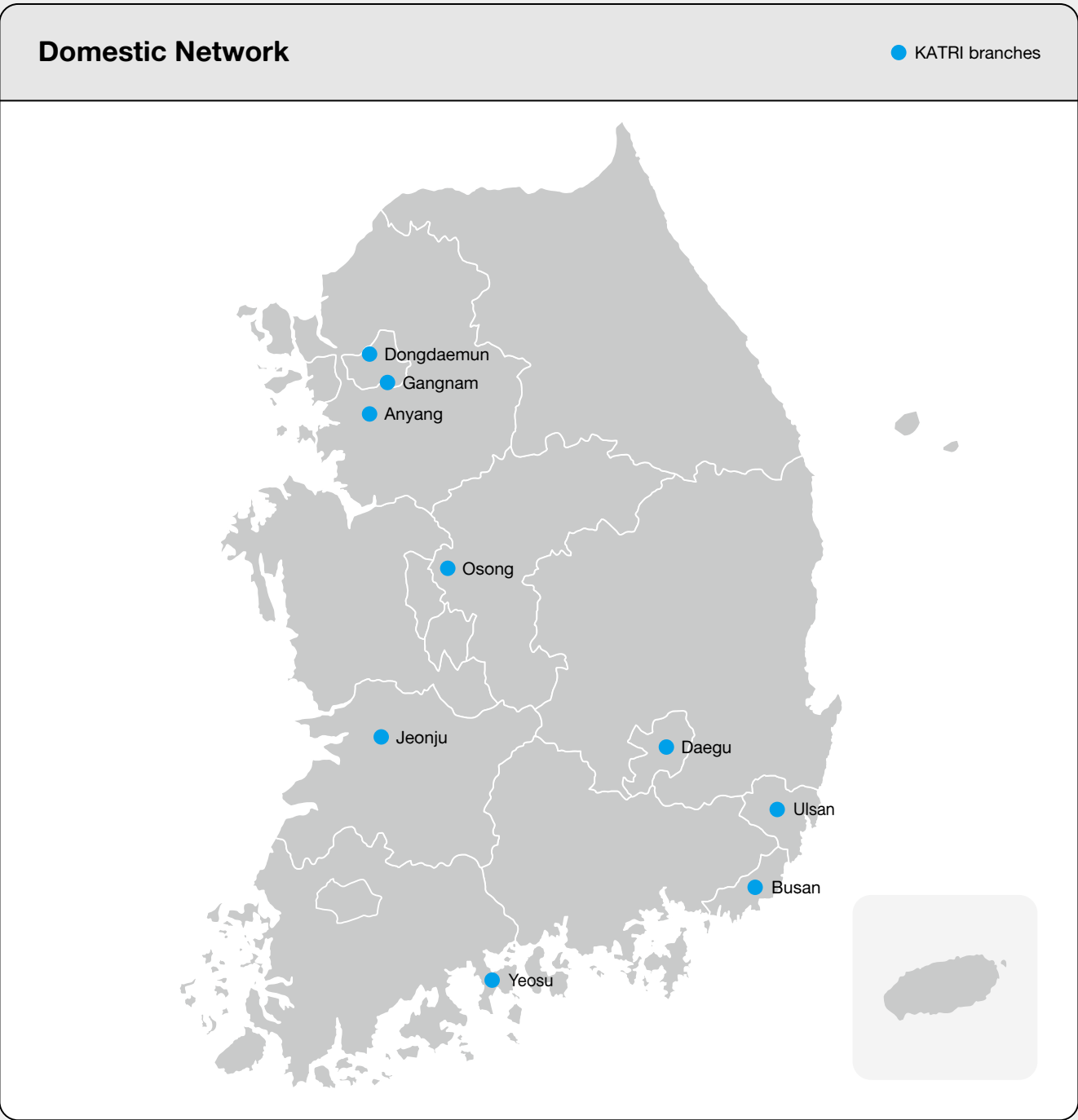
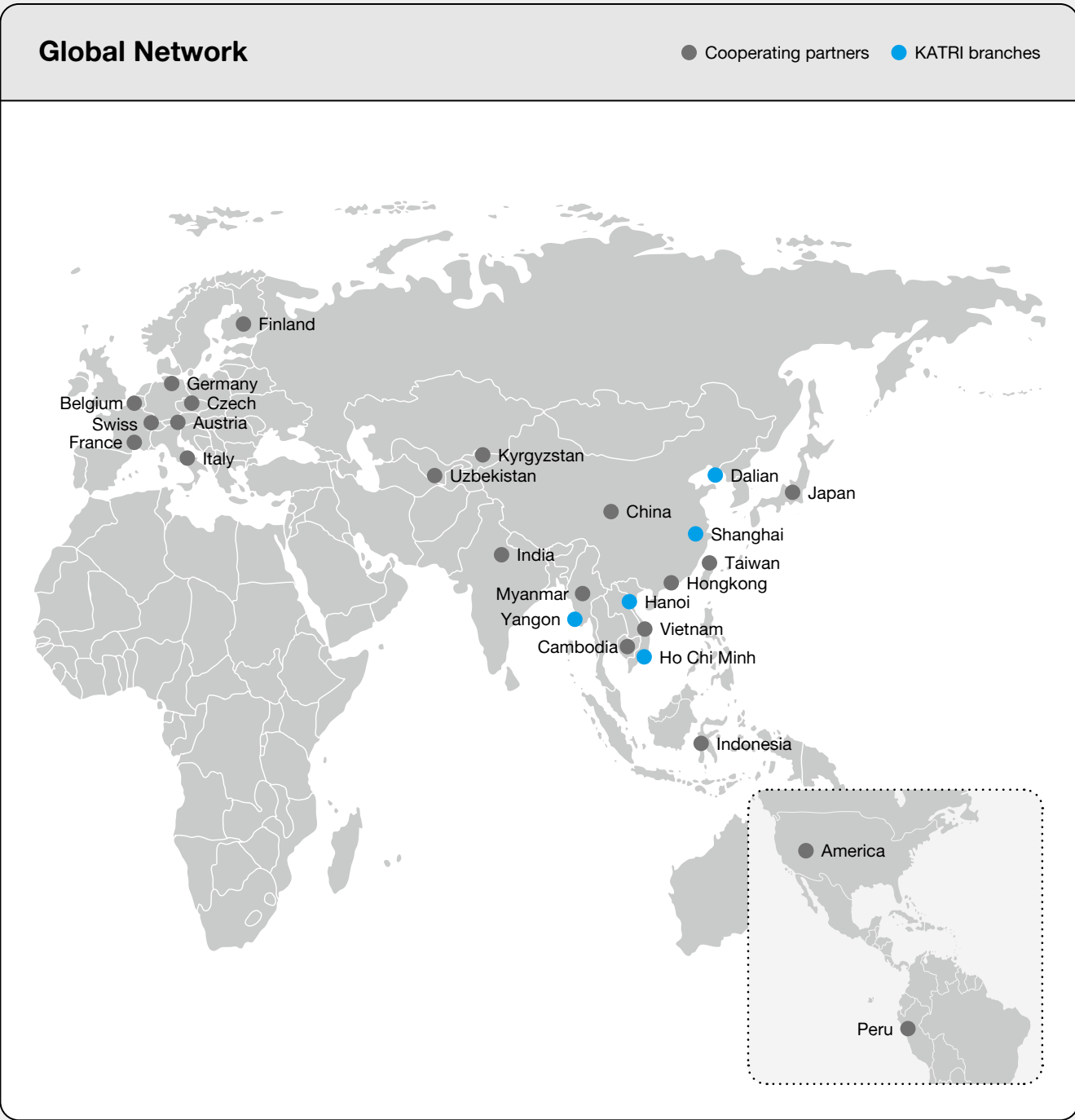
In order to provide personalized services to individual industrial sites from nearby, KATRI operates offices for five major regions in Korea (Seoul, Gyeonggi, North Chungcheong Province, Yeongnam, Honam) and Asian nations (China, Vietnam, Myanmar).

Domestic and international partnerships



KATRI Network

	Location (on map)	Area	Specialization (+name of international branch)
Domestic	Seoul	Dongdaemun Gangnam	Textile/Fashion
	Gyeonggi Province	Anyang	Mobility, Consumer Chemical Goods, Biotechnology, Environment
	North Chungcheong Province	Osong	
	Yeongnam	Busan Ulsan Daegu	Textile/Fashion, Mobility
	Honam	Jeonju	
		Yeosu	Environment R&D
International	China	Shanghai Dalian	KATRI Shanghai Testing service Co., Ltd KATRI Shanghai Testing service Co., Ltd Dalian Branch
	Vietnam	Ho Chi Minh Hanoi	KATRI Vietnam Co., Ltd Ho Chi Minh Inc. KATRI Vietnam Co., Ltd. Hanoi Branch
	Myanmar	Yangon	MKATRI (Myanmar & KATRI Joint Venture Company)









Business Services

With specialized professionals and the latest cutting-edge technology, KATRI enhances product quality through its testing, inspection, certification, consulting, and R&D services.







1	Testing	KATRI tests products and materials in standardized testing processes to calculate characteristic values and produce results.
2	Inspection	KATRI passes or fails products and/or facilities on a basis of professional examination of test results.
3	Certification	KATRI, as a public institution, determines whether products fulfill official standards before certifying them.
4	Consulting	KATRI provides personalized consulting services for companies in a wide range of areas for every stage of the product lifecycle, such as development, quality assurance, and accident investigation.
5	Research &Development	KATRI works in partnership with the public and private sectors in a range of research initiatives such as standardization, enhancement of public trust, and development of new evaluation technologies.

Business Areas

KATRI continues to expand its base from textile and material analysis into children’s products, mobility, consumer chemical goods, biotechnology, and environment.

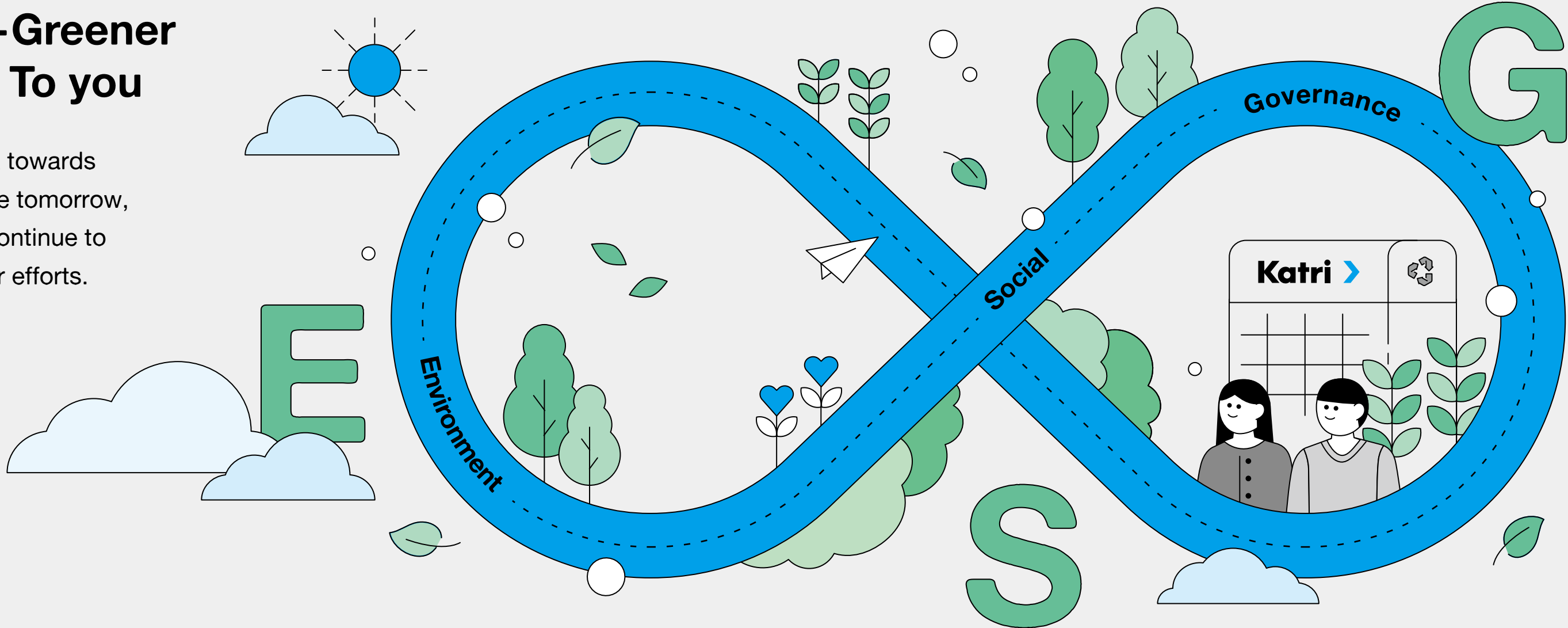
Fashion &Textile	Children’s Products	Mobility &Materials	Living &Life Style	Health &Beauty	Environment
					
Fashion/apparel/etc.	Textile products	Automotive interior /exterior parts	Household chemical products	Retail cosmetics	Atmospheric quality
Military/public sector uniforms	Toys	Electric components	Biocides	Natural cosmetics	Indoor air quality
Protective apparel	Care articles	Polymers/plastics	Laundry appliances	Hygiene products	Biodegradation
Furniture/home and living	School things	Rubber/metals	Cleaning products	Quasi-drugs	Biomass
Textiles/subsidiary materials	Children’s products	Compound and composite materials		Microorganisms	
		Construction materials			

Testing and Inspection Procedures

1		Consultation consultation on test subjects, sample/specimen size, working day, test method, etc. Clients are advised to take full advantage of the consultation process to clarify with their assigned consultant the tests to be conducted, the required sample size, the working day of testing, and the test method involved.
2		Submission submission of the testing request form and sample[s] Clients are advised to submit the test request form with a sufficient amount of the sample(s) required for the test. As testing request forms are categorized according to purpose, and may differ in method and standards, clients must fill in the names of the submitting organization, the vendor(s), and the buyer(s).
3		Sample receipt checking, counseling, and receipt of sample[s] Once sample(s) have been submitted and testing/analysis is underway, changes to or cancelation of the test are only possible in highly exceptional circumstances. Clients are advised to review their requests carefully and follow consultation processes prior to submission.
4		Payment payment of testing fees Payment must be made at the time of testing request submission. Additional fees are charged for additional testing or changes to tests, and must be made upon the issuance of test reports.
5		Test analysis inspection (testing/inspection) Upon receipt of testing requests, expert professionals undertake rigorous testing and inspection in accordance with standards and guidelines.
6		Issuance of test/inspection report test result consultation Test/inspection reports containing quantified data and quality overviews for factors such as characteristics and the presence of harmful materials are issued.

Better-Greener Future To you

As you work towards a sustainable tomorrow, KATRI will continue to support your efforts.



Environment-Conscious Service

Reducing waste

Biodegradability Assessment Service

Reducing plastics

Recycled Polyester (PET) Identification Service

Reducing fossil fuels

Biomass Content Analysis Service

Reducing microplastics

Analysis Service of microplastics

CO₂ emissions from the breakdown of compounds by microorganisms, and the oxygen consumption of the process are analyzed according to international standards in order to foster a healthier resource-cycling ecosystem.

A KATRI-exclusive service, upcycled products are checked to see if they utilize recycled PET bottles to encourage businesses to manufacture greener products.

As the first testing and certification institute in Korea to implement an accelerator mass spectrometer, KATRI analyzes nature-based materials and continues to expand this process into a range of industries.

By analyzing the release of microplastics generated during the washing process, KATRI supports the development of eco-products for clothing and laundry appliances.

ESG

Environmental and social responsibility, as well as the value of transparent management remain KATRI's core values for a sustainable future for both society and the earth.

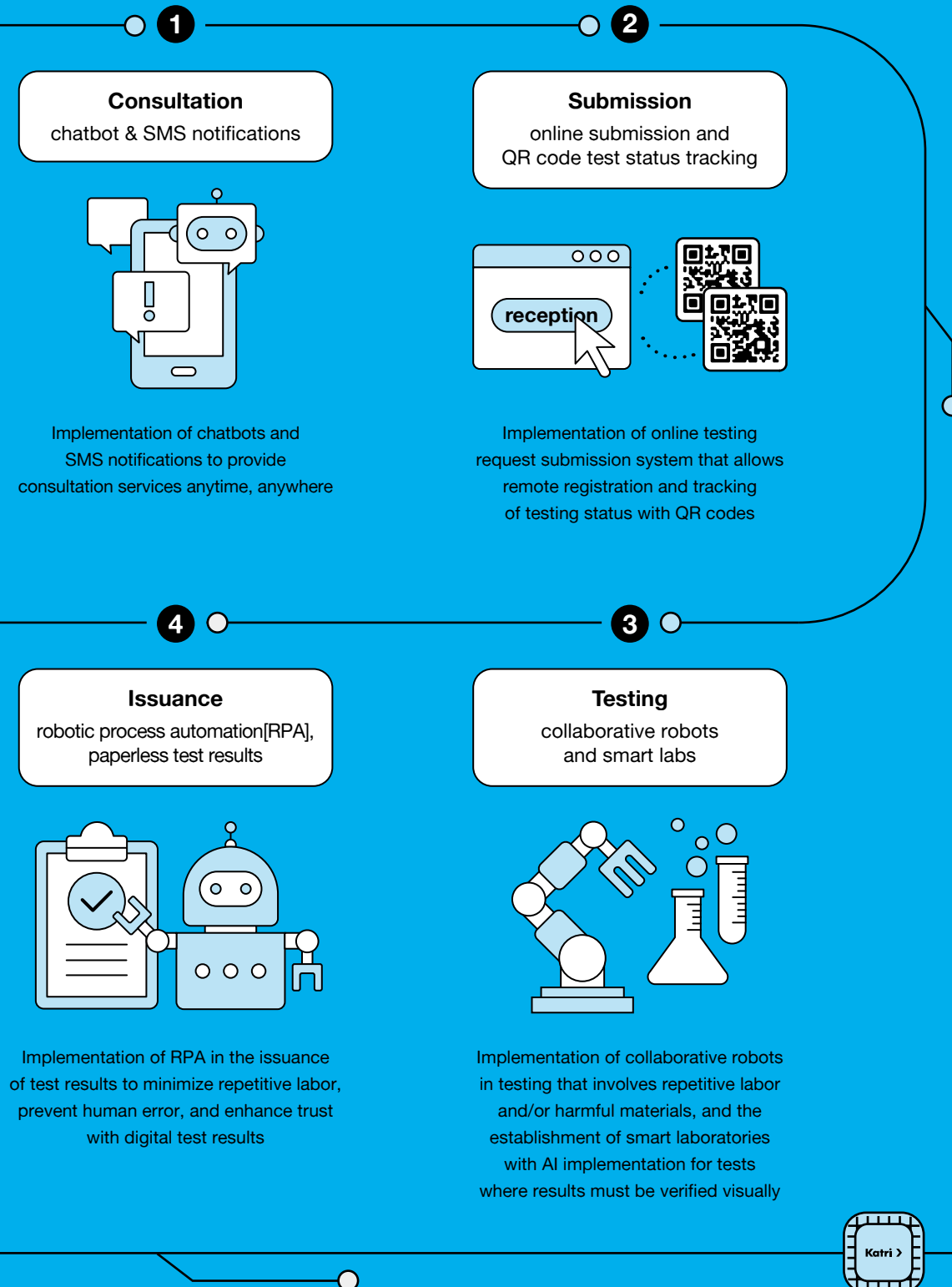
Environment Green services & activities	Social Growing together & Creating social value	Governance Business ethics & Compliance
<div>Eco-friendly certification service</div> <div>Waste disposal management</div> <div>Pollutant disposal management</div>	<div>Growing together with partners</div> <div>Guaranteeing employee and executives' safety and welfare</div> <div>Promoting diversity and gender equality</div>	<div>Ethical and equitable management</div> <div>Operation of audit team</div> <div>Transparent board management</div>

DX Digital Transformation

As a leader in industrial big data and digital transformation, KATRI develops new testing and certification infrastructure to support businesses and consumers.

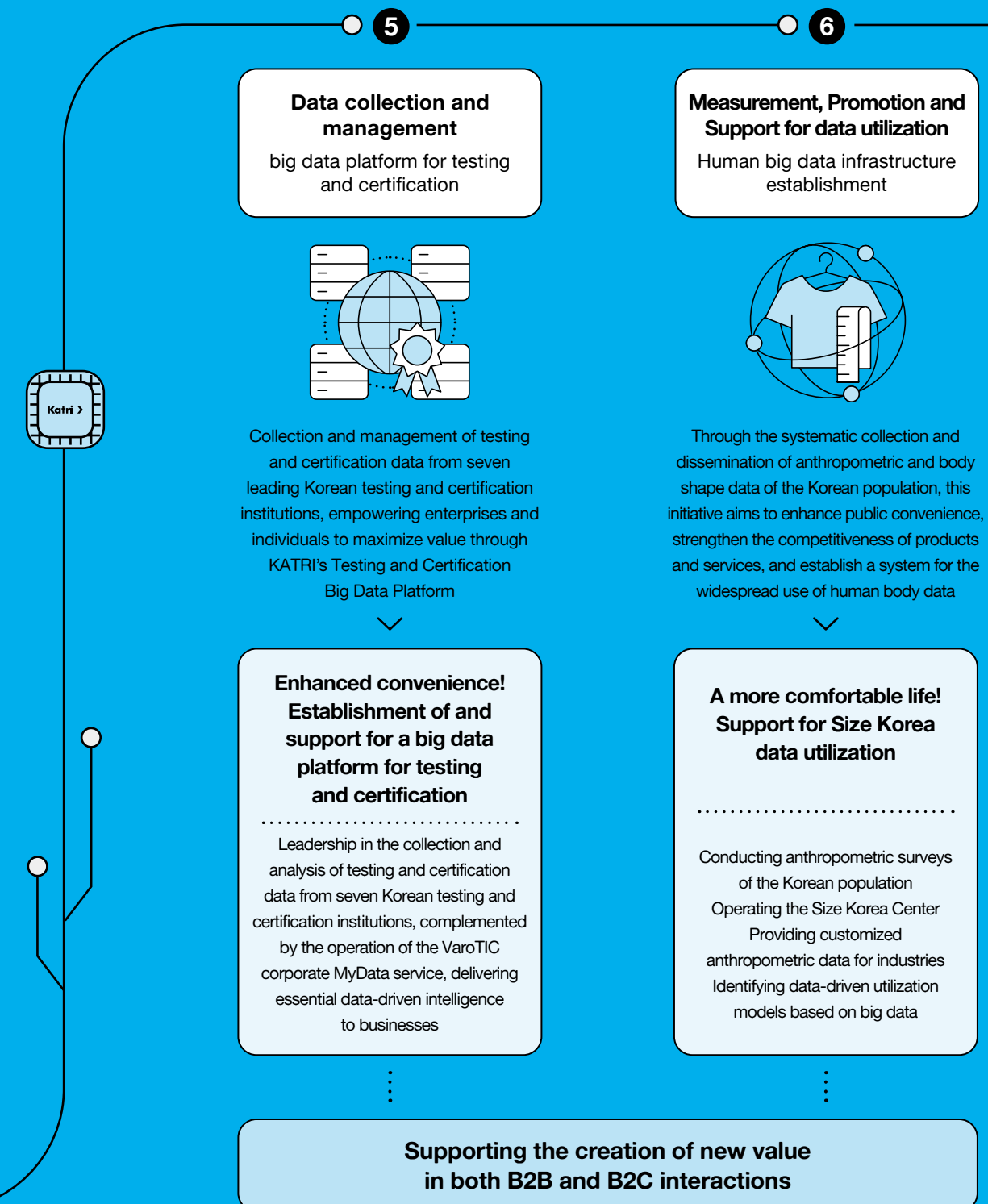
Digital transformation services utilizing promising IT technologies

KATRI is making digital transformation a reality in all stages, from consultation to submission, testing, and issuance of test reports.



Public-sector research related to data

KATRI has been commissioned by the government to carry out various initiatives, including 「Establishment and Utilization of a Testing and Certification Big Data Platform」, 「Anthropometric Survey of the Korean Population」, 「Operation of Anthropometric Infrastructure and Industrial Support Program」, and 「Human Big Data Infrastructure Establishment Project」, thereby supporting the digital transformation of both the public and industry sectors.





Publish KATRI
Address 51, Wangsan-ro, Dongdaemun-gu, Seoul, Korea
TEL +82-2-3668-3000
FAX +82-2-3668-2900
Editing & Design SUNNYISLAND
Printing GMADE C&P
Published Month 2025. 04